

WHO ARE WE?

The work of ETF-ATM is led by a chair and two vice-chairs elected every four years, alongside a Steering Committee composed of the most active representatives of our affiliate unions. The ETF secretariat in Brussels provides support.

WHAT DO WE DO?

Our overall goal is to ensure that aviation retains its reputation as the safest mode of transport, while offering fair opportunities to all stakeholders including workers.

- We represent the social, cultural, health and economic interests of ATM employees.
- We push the industrial relations agenda on behalf of trade union members working in ATM towards the EU Institutions and related bodies.
- We engage with ATM employers and other unions to find concrete solutions in the ATM social dialogue working group.
- We build our influence vis-à-vis the EU Institutions and other bodies (EASA, EUROCONTROL, SESAR, etc).
- We promote equal opportunity and the elimination of discrimination based on sex, gender, age, race, ethnicity, sexual orientation, religion or disability.
- We promote practical international cooperation, support and joint action.



- **The European Transport Workers' Federation (ETF)** is a pan-European trade union organisation, with more than 200 affiliate trade unions from the EU, the European Economic Area, and Central and Eastern European countries. We represent more than 5 million workers in all modes of transport and fisheries from 42 European countries.



- **The ETF Civil Aviation Section** represents around 386 000 workers. Our work is divided into three areas: air traffic management, joint aircrew (cabin crew + pilots), ground staff. The ETF represents aviation workers in EU-level social dialogue with employers' organisations, and we are a recognised stakeholder in bodies such as the EASA, EUROCONTROL and SESAR.

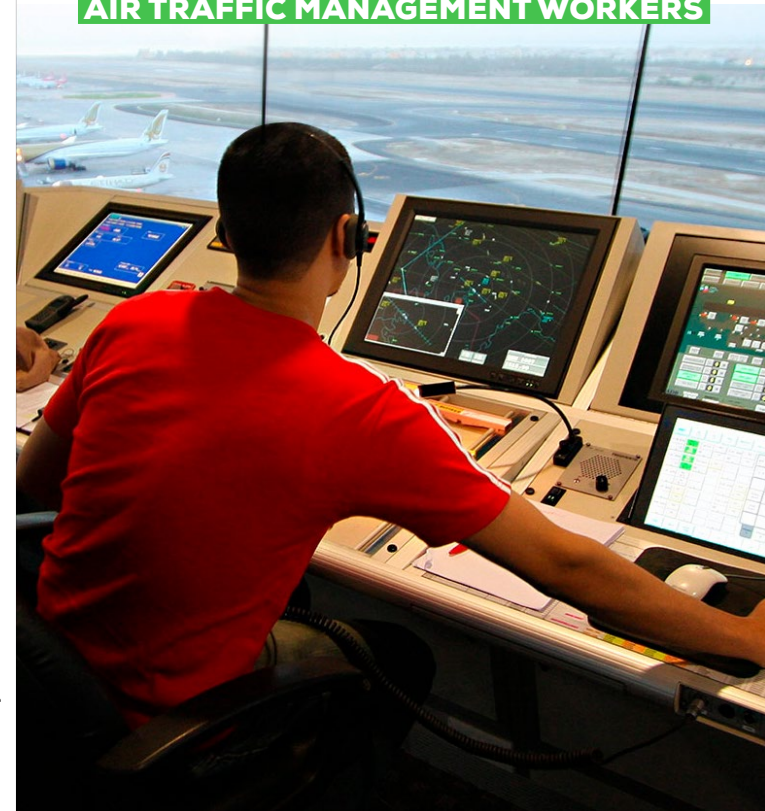


- **The Air Traffic Management Committee (ETF-ATM)** represents 25 000 workers in air traffic management services: ATCOs; ATSEPs; engineers; FISOs; AIS officers; MET officers; and administrative staff working for ANSPs. We are the only trade union body that coordinates and represents trade union members from all the different domains of ATM.



THE ETF-ATM COMMITTEE

EUROPE'S VOICE FOR
AIR TRAFFIC MANAGEMENT WORKERS



Editeur responsable : François Ballesterro, rue du marché aux herbes, 105 à 1000 Bruxelles

EUROPEAN TRANSPORT
WORKERS' FEDERATION

WHERE DO WE WORK?

The Committee has dedicated members who work with specific institutions and issues:

- EASA rule-making groups
- SESAR
- ATM Social Partners' Regulatory Task Force
- European Commission Industry Consultative Body on ATM
- ATM Social Dialogue Working Group
- Expert Group on the Human Dimension of the Single European Sky
- Remote Towers
- Drones
- Safety management
- Just culture and occurrence reporting

Since aviation is an increasingly global sector, we cooperate closely with the International Transport Workers Federation on work within ICAO.

HOT TOPICS FOR ETF-ATM

ETF-ATM is currently working on various issues which will have a major impact on ATM workers:

ATM workers' right to strike

Sometimes strikes are necessary to fight for safety and fair working conditions. Industrial action by ATM workers causes a tiny fraction of flight delays in Europe, but airlines have lobbied the European Commission hard. Now the Commission has suggested that EU member states should consider measures to limit the capacity of ATM unions to strike and reduce the impact of these actions.

Together with ATCEUC, ETF has launched the campaign **Our Rights Your Safety** against this unacceptable attack on our right to strike.

Sign the petition: www.atcorights.org



Performance regulation

The objectives for the next reference period (RP3) are being set. We aim to influence the process, to reduce the economic pressure on ATM workers throughout Europe.

Appropriate Regulation

ETF's policy is to ensure that the responsibilities of ATM workers are clearly defined by appropriate regulations. We aim to simplify rules whenever possible.

Competence requirements

ATCOs and ATSEPs currently have to meet competence requirements through the ATCO licensing scheme and ATSEP requirements established by EU law. However, most workers with safety-critical tasks do not have a uniform competence scheme. ETF is fighting to gain recognition for all actors in the safety chain.

Appropriate Regulation

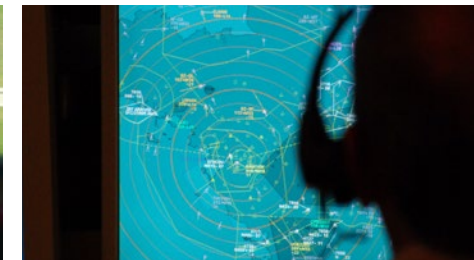
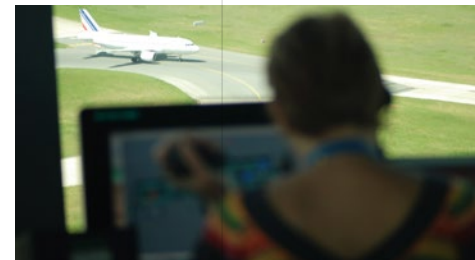
ETF's policy is to ensure that the responsibilities of ATM workers are clearly defined by appropriate regulations. We aim to simplify rules whenever possible.

Single European Sky (SES)

ETF is actively influencing all EU institutions to build on the so-called fifth pillar of the SES initiative: the social pillar. Just culture is an essential element but we are also highlighting all the social consequences of the SES. We participate in the Expert Group on the Human Dimension of the SES, where we ensure that the impact on ATM workers is at the top of the agenda.

SESAR

We contribute to SESAR activities in order to map out the future of Europe's ATM systems. Our aim is to mitigate the social consequences of the changes sweeping through the sector.



Want to know more about ETF-ATM? ➤ Contact François Ballestero, ETF political secretary for aviation: f.ballestero@etf-europe.org